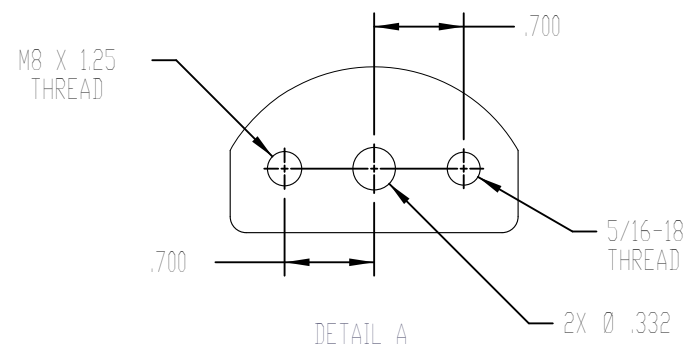
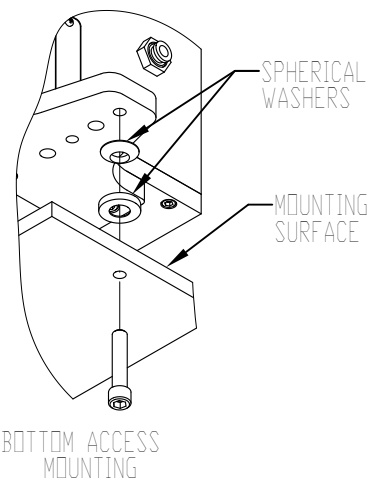
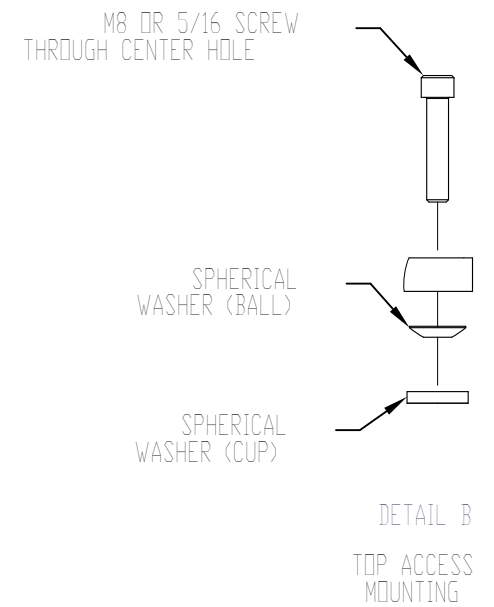
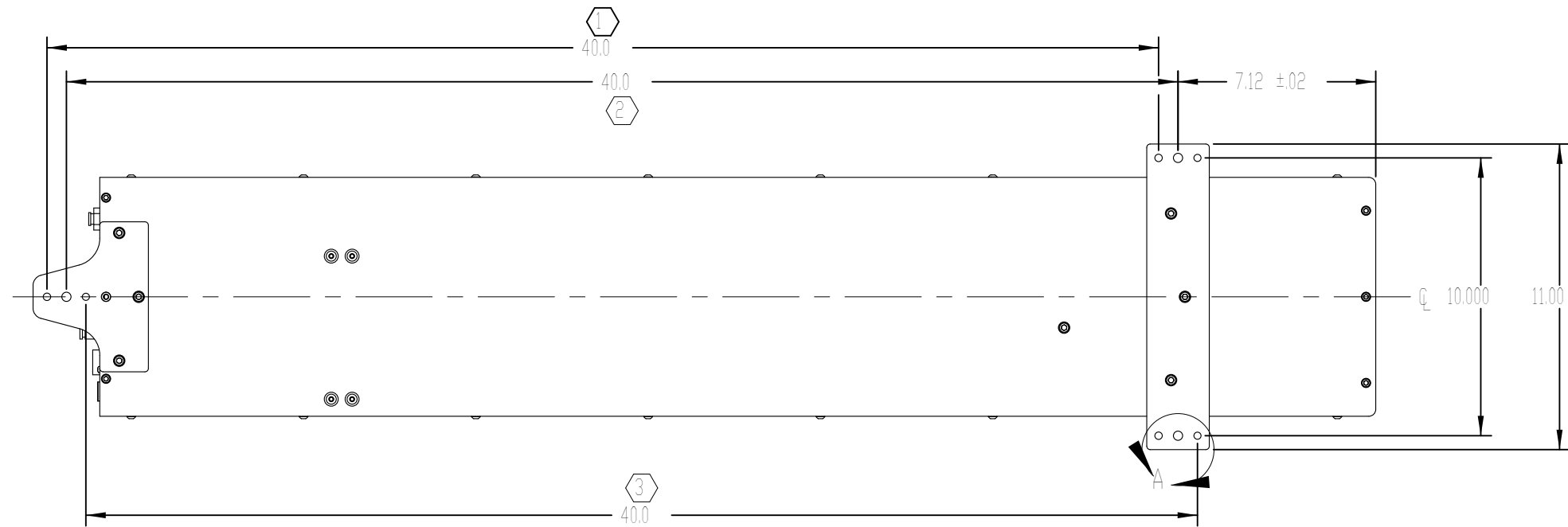
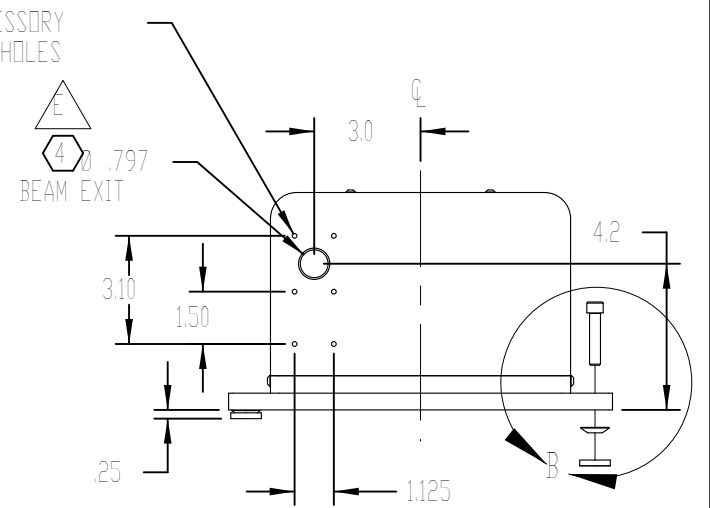
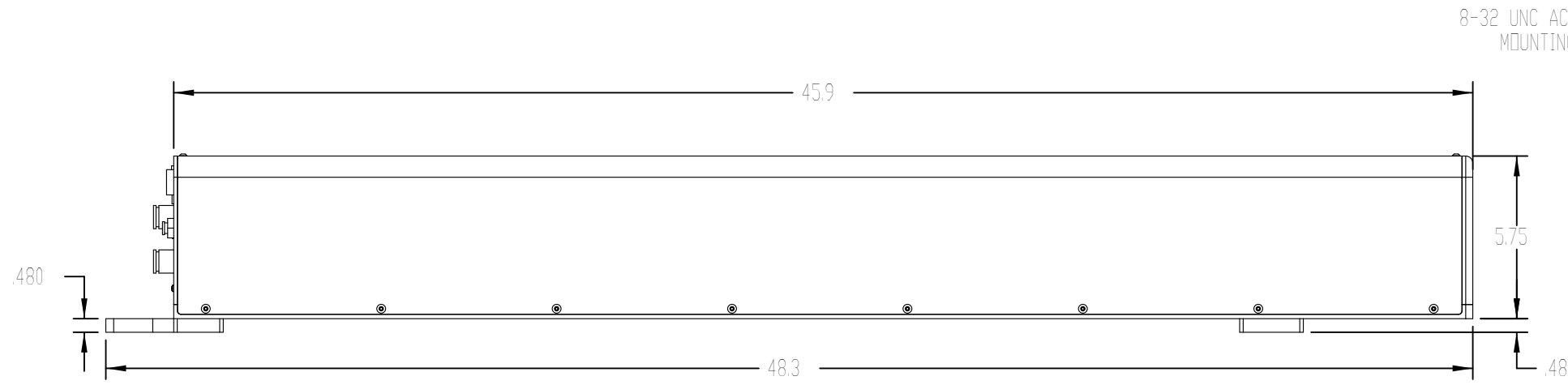
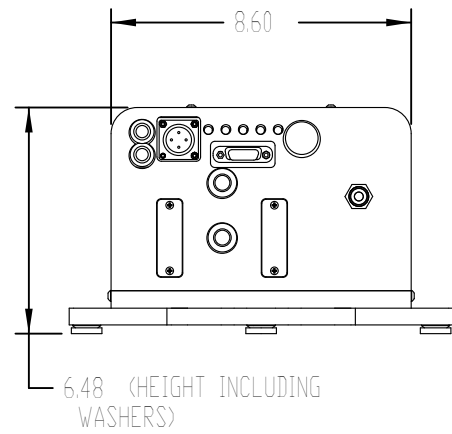



NOTES:

- ① THIS MOUNTING HOLE PATTERN IS USED WHEN BOTTOM ACCESS MOUNTING IS DESIRED WITH M8 FASTENERS.
- ② THIS MOUNTING HOLE PATTERN IS USED WHEN TOP ACCESS MOUNTING IS DESIRED, STANDARD OR METRIC FASTENERS.
- ③ THIS MOUNTING HOLE PATTERN IS USED WHEN BOTTOM ACCESS MOUNTING IS DESIRED WITH 5/16-18 FASTENERS.
- △ ④ BEAM PATH MAY NOT BE CENTERED OR PERPENDICULAR TO FACEPLATE APERTURE.

REV	ECO	DATE	DESCRIPTION	DB
D	3912	15-Aug-08	ADD BEAM EXIT, CONVERT TO SOLIDWORKS	DMD
E	4107	9-Sep-09	ADD NOTE 4	DMD



TOLERANCES UNLESS NOTED:		PROPRIETARY THIS DRAWING IS PROPRIETARY TO SYNRAD INC. AND SHALL NOT BE USED OR DISCLOSED IN WHOLE OR IN PART WITHOUT WRITTEN PERMISSION OF SYNRAD INC.	
.x = ± 0.1	ANGLE = ± 2.0 °	 SYNRAD INC. 4600 Campus Place Mukilteo, WA 98275 Phone: (425)349-3500 Fax: (425)349-3667	
.xx = ± 0.01			
.xxx = ± 0.005			
MATERIAL:		DESCRIPTION: OUTLINE & MOUNTING, F201	
FINISH:		PART NUMBER: 300-19105-01	DWG/FILE NUMBER: 300-19105-01
		SHEET 1 of 1	ENG: E. Stockinger
		UNITS: Inches	CHECKED BY: DATE: 10-Feb-04
		SIZE: B	APPROVED BY: DATE: